



**SMC Infrastructures
Private Limited**

Corporate Office: 101, SMC Square, Khopat,
LBS Marg, Thane (W) - 400 601,
Maharashtra, India.

Registered Office: Floor-3, Plot-4, K.K. Chambers,
Purushottamdas Thakurdas Road,
Fort, Mumbai - 400 001, Maharashtra, India.

Tel. : +91-22-25376700, 25334143

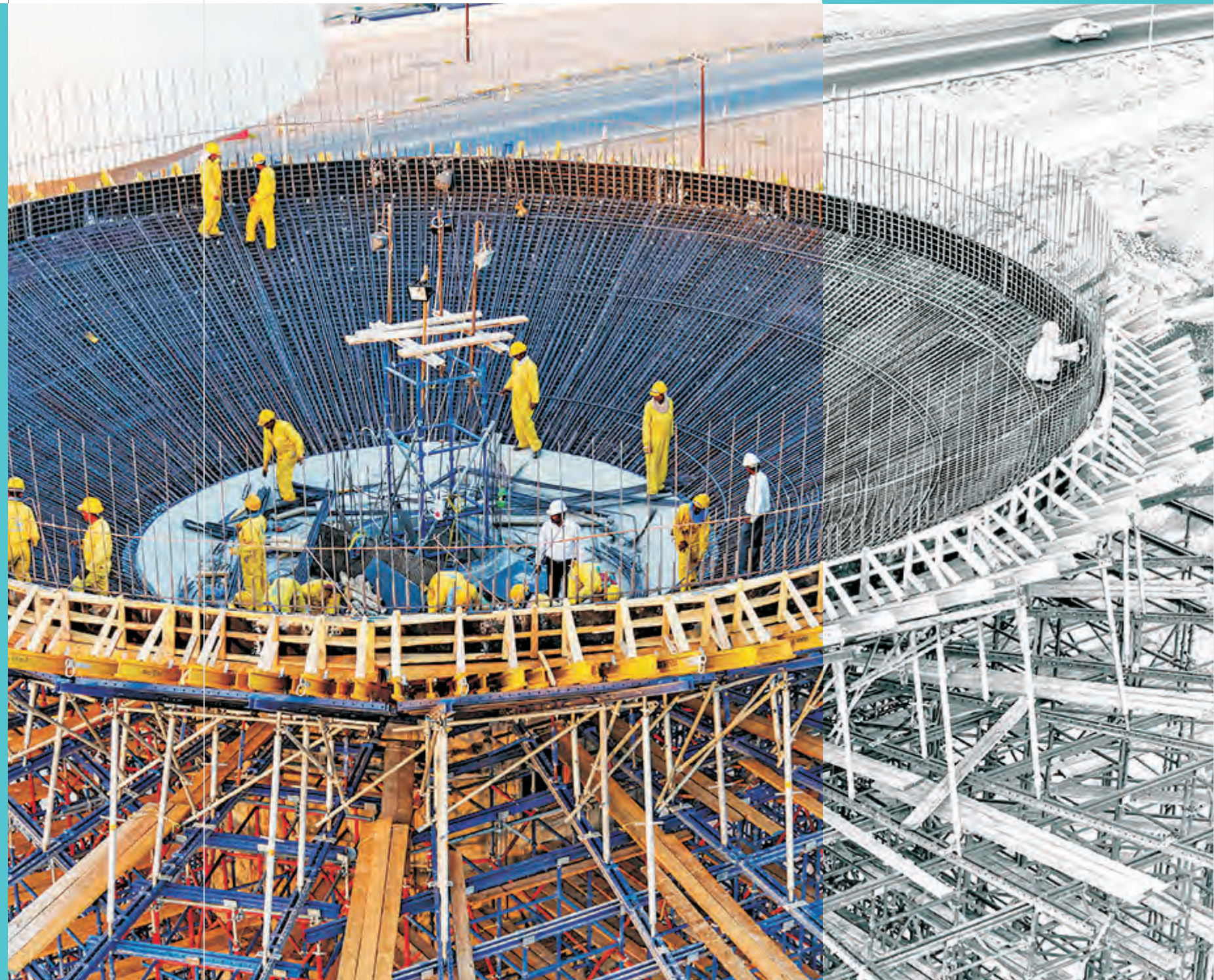
Email : smcipl@smcinfra.com,
smcipl.co@gmail.com

Website : www.smcinfra.com



**SMC Infrastructures
Private Limited**

Infrastructure for **Life**



■ We Are SMC. We Build On Dreams.

From a humble yet decisive beginning with few important projects in the field of Water and Wastewater Infrastructure Management, the SMC Group today has grown into a versatile player with the expertise to handle a wide range of infrastructure projects. Our footprint today touches various aspects of day-to-day life, including Buildings, Roads, Flyovers, Tunnels and Municipal Solid Waste Management, to name a few with different funding patterns such as EPC, BOT, HAMM, ANNUITY, ESCO, EXIM, European Funding, etc.

In just a short time, SMC has carved a niche for itself as a respected company creating enduring value in infrastructure for our customers in particular, and for society as a whole.

Today, we are a respected ISO 9001-2015 Certified company with a turnover of more than Rs. 650 crores (on standalone basis) and innumerable awards and certificates of excellence under our belt.

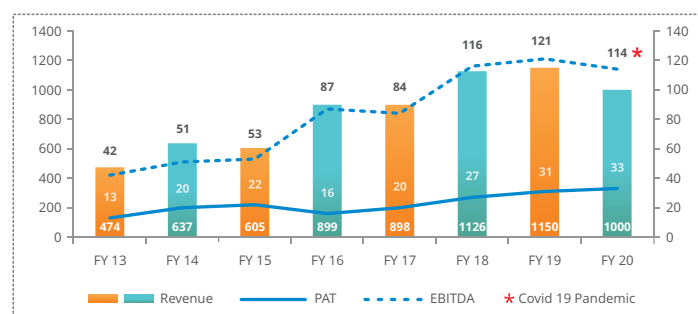
SMC Infrastructures Private Limited is a company that makes a difference. Our focus on excellence, be it in infrastructure or in our other areas of influence, is geared to ensure that we are not just a company that executes projects for profit, but one that creates infrastructure for life.

■ Our Mission

To execute every project successfully by adhering to the highest quality and safety standards, to endeavour to constantly upgrade our technical and managerial skills, thus setting the stage for achieving our full potential, every single time.

While the satisfaction of our customers is paramount, we are happy to have received recognition for our efforts from International Certification Services.

- ISO 9001 : 2015 - Quality Management System
- ISO 14001: 2015 - Environmental Management System
- ISO 45001 : 2018 - Occupational Health and Safety Management System



- SMC has been retained the long-term rating of BBB and the short-term rating of A3+ from ICRA Ratings.
- The revenue has grown at a CAGR of over 10% in the last 8 years with strong EBITDA and PAT levels.
- The order book stands at INR 2414 crores, providing us with deep visibility.
- Additionally, SMC has also acquired a major infrastructure company working in the field of Irrigation, Roads, Buildings and Power through NCLT.

Our Areas of Expertise



Water and Wastewater Management



Bridges, Roads and Tunnels



Buildings



Municipal Solid Waste Management



Manufacturing and Rehab

Above 500
Dedicated Employees

Expertise Spanning
Over 2 Generations

Project Managers with
25-30 Years of
Industry Experience

Flyover on LBS Road at Thane



MKVDC: Tembhu Lift Irrigation Scheme, Karad



JNNURM Project: 180 MLD Sump and Pump House



JNNURM Project: 1200 mm Dia. M.S. Raw Water Pumping Main



Water Distribution Network, Sinaw

NAWEC: uPVC Pipe laying in Greater Banjul Area, Gambia



Water & Wastewater Management

Under Water Management, SMC specializes in Water Distribution Network, Reservoirs & Treatment Plants pan India.

SMC has worked in the field of Wastewater Management building Sewage Treatment Plants, Sewerage Networks, Tertiary Treatment Plants, Marine Outfall, Sewage Pumping Stations.





CIDCO: 1524 mm Dia M.S. Pipeline and structural Bridge over Taloja Creek



JNNURM TMC Project:180 MLD Clariflocculators



RCF: Excellence Performance Award



MCGM: 3000 mm Dia. Middle Vaitarna Water Pipeline

Water & Wastewater Management



JICA GOA PROJECT: 100 MLD Water Treatment Plant



200 MLD Raw Water Pumps



200 MLD Intake well and Pump House



6.6 Kva H.T. Sub-station



MCGM: 900 MLD Aquazur Filters



An automated batching plant was installed exclusively for this project. With total construction machinery worth INR 100 million, and shuttering material worth of INR 60 million, this project of huge unprecedented scale, was completed on time and handed over to the Government.



Filter Gallery

MCGM: 900 MLD Water Treatment Plant, Bhandup



900 MLD Water Treatment Plant at Mumbai

The Largest in Asia

A milestone in our success story is the construction of the largest water treatment plant in Asia. A mega 900 MLD water treatment plant was set up by the Municipal Corporation of Greater Mumbai at Bhandup. This project was executed in association with the French conglomerate Degremont Limited (Now Suez Group).

The water from Tansa, Vaitarna and part of Bhatsa source is received at Bhandup and then treated and pumped for city use. It has the state of art technology of Pulsator clarifier and aquazur filter with cross wash arrangement. This has an ability to treat and recycle wash water to make use of every drop of water.





Reverse Osmosis (RO) Shed



Fine Bubble Diffusers



45.5 MLD Capacity Sewage Intake and Pumping Station At Ghatkopar



Aerobic Tank



Activated Sludge Pumps

22.75 MLD Sewage Treatment Plant at RCF

The largest in India based on the MBR and followed by RO.

The 44.5 MLD Raw sewage intake and pumping station and intake within MCGM premises at Ghatkopar, Mumbai & 22.75 MLD Sewage treatment plant (based on latest ultrafiltration Membrane Bioreactor (MBR) Technology followed by Reverse Osmosis (RO) technology) at RCF Trombay generates treated reusable water of Industrial Quality.





Marine Outfall at Tarapur

Maintaining an ecological balance.

Tarapur houses major industrial estates of Maharashtra including bulk drug manufacturing units, specialty chemical manufacturing units, steel plants and the highly polluting textile industries which dominate this area. An outfall sewer was envisaged to carry the effluent water deep into the Arabian Sea to reduce the impact on the surrounding vicinity areas, marine life and maintain ecological balance. SMC was entrusted with the work of laying this outfall sewer pipeline. It is placed in the sea bed, where minimum depth of water is at least 12 m and runs along the length of 7.1 kms into the sea, thus mixing the effluent water with the sea water and diluting its impact.





BWSSB: 40 MLD TTP Raja Canal Bangalore



BWSSB: 40 MLD TTP Raja Canal Bangalore



BWSSB: 50 ML GLR, Gottigere

BWSSB: 5 MLD SBR at Chikbanwara



BWSSB: 300 MLD WTP TKHalli, Bangalore



Projects at Bangalore

At Bangalore, SMC has worked with many technology partners for BWSSB such as 775 MLD and 300 MLD Water treatment plants with Suez to a 100 MLD Sewage Treatment Plant with Enviro and 50 MLD reservoir in Gottigere to name a few.

Along with treatment plants, SMC is working for Karnataka Urban Development Board at Ramanagar for drinking water supply.





Expansion of Current Facility by new 100 TPD Plant



Municipal Solid Waste Management Plant, Goa

95% waste recycled - a milestone in waste treatment.

Today one of the biggest environmental challenge that the governments world wide are facing is solid waste management.

A first of its kind in India, the Municipal Solid Waste Management plant at Goa, has been commissioned by SMC through a subsidiary HWT with SFC. This plant treats waste to a maximum to generate electricity, compost and RDF. The plant is designed to recycle up to 95% of the waste, making it a huge milestone in waste treatment.

Looking at the success of this plant, Goa Government has awarded expansion of the same along with constructing a new facility in South Goa.





JNNURM Project: Administrative Building, Temghar



TMC : Sport Complex, Mumbra

Buildings

With the experience of infrastructure construction, SMC boasts of developing world class commercial complexes and heavy structural fabrications.



SMC Square Commercial Building, Thane



GWMC Goa : MSW Administrative Building, Saligao, North Goa

NBCC: Redevelopment of Kidwai Nagar (East), New Delhi



Mall of Muscat

Biggest mall in Oman

Mall of Muscat, a dream of Tamani Global Development and Tourism Ministry of Oman was brought to life by SMC on 31st March 2019. The mall has everything that one can imagine, from Multi screen theatres to Snow Village, from Aquarium to Hypermarket and a vast spread of multi cuisine dining.



Project Highlights

- Built up Area : 159000 Sqm
- Single Pour Concrete : 6692 Cum
- Total Reinforcement : 13760 MT
- Total Concrete : 140288.50 Cum



Iteen Interchange, Salalah, Oman



TMC: SATIS Flyover, Thane



Two level Champakkara Bridge
using common pier for Kochi Metro, Kochi



TSCL: Segmental box girders of
Multi Modal transit hub, Thane

Bridges, Roads and Tunnels

Infrastructure for life

Connecting lives, a core value that SMC has always believed in, can be reflected by our choice of projects in Flyovers, Roads, Metro and Tunnel. With the ever changing world, SMC has created structures that will stand the test of time.



MMRDA: Elevated Road, Airoli to NH4



MMRDA: AGLR Flyover, Mumbai



Mumbra End, Airoli Katai Naka Tunnel

■ Roads and Tunnels



RHS Tube, Airoli Katai Naka Tunnel



NHA: Four Lane of Hyderabad-Yadgiri
Section of NH 202



TMC: UTWT Road, Thane



Ginigere-Gangavathi-Sindhanur (SH23), Karnataka

Bridge Girder V-Groove Cutting



Fibre wrapping and prestressed carbon laminates



Railway sleepers stacking and curing tank



Reinforcement Scanning by Using GPR Machine



Epoxy Grouting

Manufacturing and Rehabilitation Projects

SMC with its vast experience in execution of civil projects, decided to take a step in the direction of manufacturing. A setup in Bangalore, which manufactures valves was started under the name of WC & C valves.

SMC also produces Railway Sleepers at Davangere, Karnataka under the manufacturing name of Raghavendra Rail Infrastructure Private Limited.

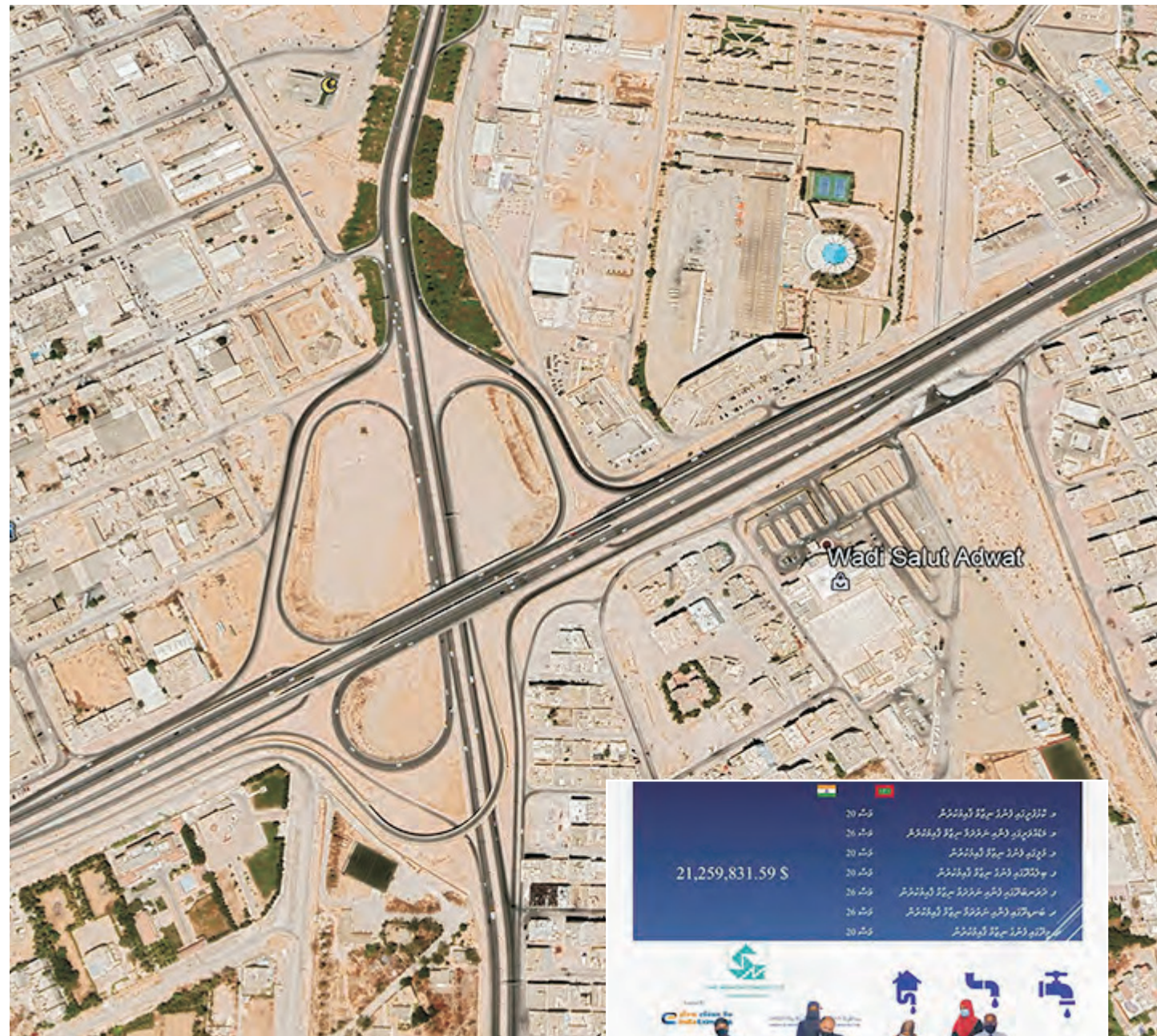
SMC has completed replacement of Street lights in Jaipur, Amritsar and is now in process at Bangalore with products manufactured by Samudra Electronics

SMC with a team of trained professionals, has taken up work of rehabilitation in Metro cities.

Primarily the works include repairs of Structures such as Bridges, Buildings, Reservoirs, Railway Stations, Jetties etc.

Railway Sleepers Manufacturing at Davangere





Salalah, Oman



Malé, Maldives



Mulanje, Malawi



Nguludi, Malawi



Barka, Oman

Beyond Boundaries

SMC has successfully completed projects overseas, in conditions different to domestic and often ahead of schedule with quality at par with India.

With a footprint in Oman, Malawi, Tanzania, Gambia, Ivory Coast, now SMC has bagged two prestigious works in Maldives under the funding of EXIM Bank, India.





People First

SMCIPL considers safety of the labourers working on site of paramount importance and all of them are provided with essential safety gears such as helmets, jackets, harness, etc. Regular safety audits are conducted on sites.

As the world faces the current Covid-19 pandemic, SMC has ensured that staff and labour work in a safe environment. Various Covid awareness camps were organised. Isolation hutments for labours were constructed. Regular temperature checks along with scheduled Covid RT-PCR tests are carried out.

Various activities are carried out to engage with employees beyond work. Cricket and Kabbadi matches were organised at various sites to build the team spirit. An on-site school has been set up for the children of the labourers. The managerial staff was taken for an off-site 10-day tour to Africa. A corporate retreat to Goa was organized for the entire office and site staff. Today, with our employee engagement programs, we can proudly boast of a next-to-nil attrition rate and the average tenure of our team in the organisation is about 30 years.



SMC Foundation

At SMC, we have always believed that even though profit is important, philanthropy comes first. We have created the SMC foundation in the year 2014 and it not only provides health insurance to all the SMC employees and their families, but also provides scholarships and educational assistance to their children. The SMC Foundation is an active partner of the Baba Amte Foundation and in offering education to the children of sex workers. Needless to say, this is just the beginning and we pledge to increase our outreach to the environment, as well as to the disadvantaged and downtrodden sections not in fits and starts, but in leaps and bounds. This is our commitment. For today, for tomorrow, and forever.

In keeping with our promise SMC Bangalore organized a tree plantation project at Raja Canal STP Site, where we have planted 100 trees of Teak and Sal. This is a step towards making the site more beautiful and greener. **We also joined the fight against Covid-19 pandemic by having realized the need and acute shortage of oxygen in hospitals and thus we donated an Oxygen Generator to a hospital in Thane along with a liquid oxygen transportation tanker to Government of Maharashtra.** Food packets and Covid safety kits were given to the stranded and needy people.



Liquid Oxygen Transportation Tanker



Oxygen Generator

